



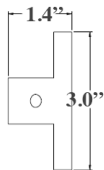
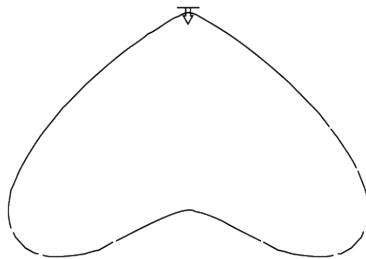
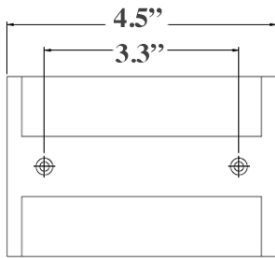
DL15 CURVE | Deck Light Curve

PRODUCT DESCRIPTION

Ideal for decks, railings, wall mounts, step lighting, and fences.

With its unique housing design, the Deck Light Curve is used to emphasize or re-define the overall visual composition of any wall, steps or even decks.

PRODUCT DIMENSIONS & BEAM SPREAD

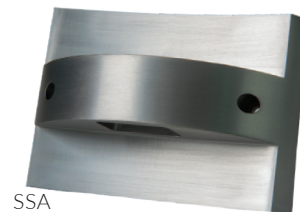


FEATURES & BENEFITS

- Built in the U.S.A.
- CNC-machined from 6061 aircraft-grade aluminum.
- U.S.A. made light engine and driver.
- Built in surge protector.
- IP67 rated.
- CREE 2 step binned LEDs with L70 over 80,000 hours.

SPECIFICATIONS

- **Construction:** 6061 aircraft-grade aluminum
- **Finishes:** Architectural Bronze (AB), Black (BLK), White (WHT), Stainless Aluminum (SSA)
- **Lead Wire:** 60" 22 AWG tinned copper
- **Mounting:** Bracket included
- **Driver System:** Internal
- **Operating Voltage:** 10.5-18 VAC
- **CRI:** 80+
- **Beam Spread:** 120°



SSA



WHT



BLK



AB

POWER CONSUMPTION

COLOR TEMPERATURE	WATTAGE	VA	LUMENS
3000K*	1W	2VA	115LM

ADDITIONAL COLOR TEMPERATURE OPTIONS

- 2700K
 ● 5000K
 ● Amber
 ● Blue
 ● Royal Blue
 ● Green
 ● Red

WARRANTY

20 Year Limited Warranty

CERTIFICATIONS



Intertek

Tested to UL standards.

**Indicates stocked items. Non-stocked items require 5-7 business days additional lead time, special order deposit and are non-refundable.*

IES files can be found at www.gardenlightled.com