



# SURFACE / RZR INSTALLATION INSTRUCTIONS

SAVE THESE INSTRUCTIONS FOR FUTURE REFERENCE  
Follow all NEC guidelines and local electrical codes.

**NOTE:** Use Garden Light LED transformers only - Garden Light LED will not repair or replace under warranty any luminaires or drivers that have been damaged as a result of using other manufacturer's equipment. **LISTED FOR OUTDOOR USE ONLY**

This Garden Light LED luminaire uses LED technology that has an operating voltage range of 10.5 - 18 Volts AC. Garden Light LED recommends using a 15 Volt tap.

**WARNING - RISK OF ELECTRIC SHOCK:** This luminaire must not be installed within 10FT (3.05m) of a pool or spa.

Garden Light LED  
800-511-2099  
www.gardenlightled.com

Low voltage wire is intended for shallow burial only and should be at a maximum depth of 6 inches (152mm).

## LUMINAIRE INSTALLATION (see Figure 1.)

### FOR INSTALLATION ON AN OUTDOOR-RATED WALL BOX OR ON A FLAT SURFACE

1. To prevent electrical shock, unplug transformer from the electrical outlet before installation or service of Luminaire.
2. Shorten and strip the Luminaire lead at the appropriate length and attach to the Low Voltage Main Supply Lines in the wall box or via hole in the mounting surface..
3. Attach the Mounting Bracket to the wall box or plan screw holes to be offset to the right as shown in Figure 1, using supplied #6-32 x 1/4" screws inserted through the curved slots in the bracket. The curved slots allow the Mounting Bracket to be rotated to ensure installation is level with the ground.
4. Insert supplied #6-32 x 3/4" screws into the upper threaded holes in the Mounting Bracket (see Figure 1). If the mounting surface is flat or flush with the wall box, leave the screws protruding approximately 1/16" from the Mounting Bracket. If the wall box is countersunk into the mounting surface, the screws can be left protruding up to 5/8" to make the Luminaire flush with the mounting surface. Adjust screws as needed.
5. Push the Luminaire Lead into the wall box or into the Lead Hole while placing the Luminaire onto the Mounting Bracket off-center approximately 1/4" to the right, with Mounting Bracket protruding screws aligned with holes in back of Luminaire. Slide Luminaire to the left to secure Luminaire in place. If the Luminaire does not slide onto the Mounting Bracket, loosen the protruding screws slightly. If the Luminaire is loose on the Mounting Bracket, tighten the protruding screws slightly. Proper fitment should be snug.

Figure 1.

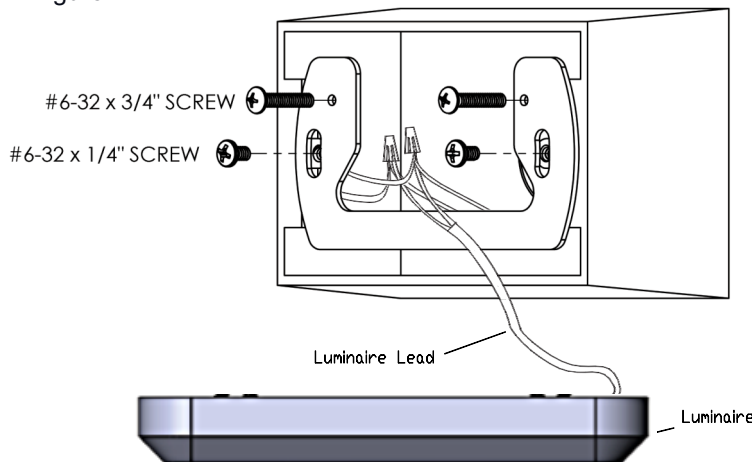
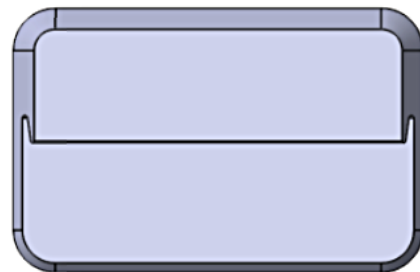


Figure 2.



**DESIGNED TO INSTALL IN 3" OR 4" SINGLE GANG WALL BOXES OR FOR FLUSH SURFACE MOUNT-** For low voltage applications, use 1" depth or greater wall box. For high voltage applications, use 2.75" depth or greater wall box (to fit electronic transformer).

### SUITABLE FOR DOWNWARD LIGHTING

**INSTALLATION ON 120VAC MAIN SUPPLY LINE REQUIRES OPTIONAL ELECTRONIC TRANSFORMER.**

Contact Garden Light LED for more information.

**IF INSTALLED IN A MANNER NOT OUTLINED IN THIS DOCUMENT, FACTORY WARRANTY MAY BE VOID.**

### NOTES:

Garden Light LED Drivers self-regulate to keep the LED brightness the same throughout the entire voltage range, ensuring a consistent output among Luminaires. It is not necessary to balance the voltage to each Luminaire.

\*\*\*Use only wire connectors Listed for wet locations. Contact Garden Light LED for suitable connectors. (800-511-2099)

\*\*\*If additional wire is needed to connect the Luminaire to the low voltage transformer, contact Garden Light LED. (800-511-2099)

If you have any questions regarding installation or Garden Light LED luminaires, please call 800-511-2099 and our knowledgeable staff will assist you.