



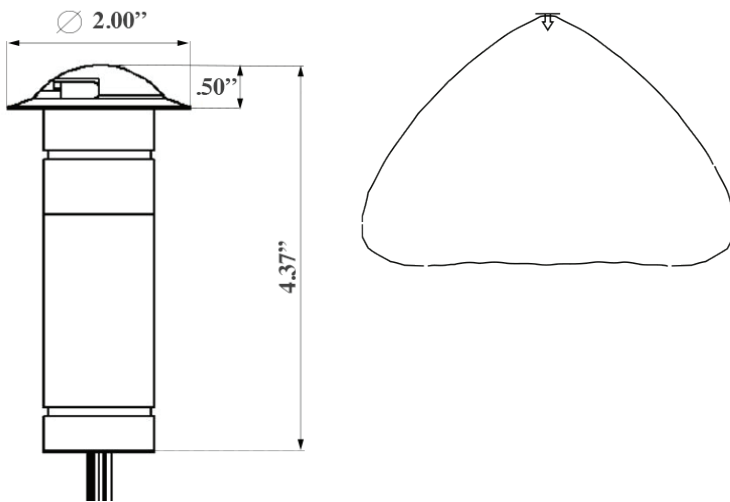
EAGLE EYE | Predator Series Recessed Light

PRODUCT DESCRIPTION

Ideal for architectural accents and flat surfaces.

Released as part of the Predator Series line of professional lighting solutions, the Eagle Eye is perfect for any specialty lighting applications such as deck and step lighting as well as architectural accents.

PRODUCT DIMENSIONS & BEAM SPREADS



FEATURES & BENEFITS

- Built in the U.S.A.
- CNC-machined from 6061 aircraft-grade aluminum or raw brass.
- U.S.A. made light engine and driver.
- Built in surge protector.
- Strong enough to withstand pressure washers.
- IP67 rated.
- CREE 2 step binned LEDs with L70 over 80,000 hours.

SPECIFICATIONS

- **Construction:** 6061 aircraft-grade aluminum or raw brass
- **Finishes:** Stainless Aluminum (SSA), Brass (BR)
- **Lead Wire:** 36" 18 AWG tinned copper
- **Lens:** Frosted flat
- **Driver System:** Internal
- **Operating Voltage:** 10.5-18 VAC
- **CRI:** 80+

| COLOR TEMPERATURE | WATTAGE | VA | LUMENS |
|-------------------|---------|-----|--------|
| ● 3000K* | 2W | 5VA | 110LM |

ADDITIONAL COLOR TEMPERATURE OPTIONS

● 2700K ● 5000K ● Amber ● Blue ● Royal Blue
● Green ● Red

WARRANTY

20 Year Limited Warranty

CERTIFICATIONS



Tested to UL standards.

**Indicates stocked items. Non-stocked items require 5-7 business days additional lead time, special order deposit and are non-refundable.*

IES files can be found at www.gardenlightled.com