



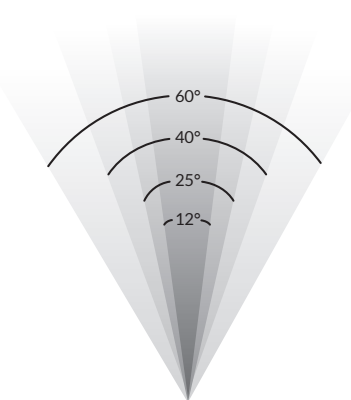
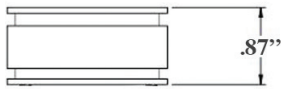
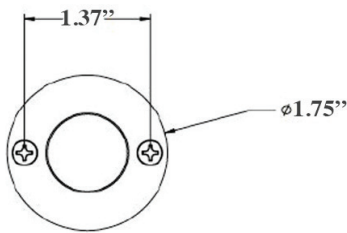
S1H | Saturn Halo (Submersible)

PRODUCT DESCRIPTION

Ideal for uplighting, shadowing, wall washing, silhouetting, architectural accents, downlighting, and fountains.

Like it's counterpart the S1 Mini Saturn, the S1 Saturn Halo is also small and compact. With a built-in driver, this fixture can be used virtually anywhere.

PRODUCT DIMENSIONS & BEAM SPREADS

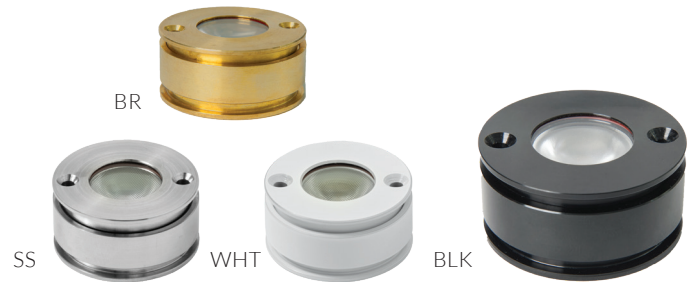


FEATURES & BENEFITS

- Built in the U.S.A.
- CNC-machined from 6061 aircraft-grade aluminum, stainless steel or raw brass.
- U.S.A. made light engine and driver.
- Built in surge protector.
- Fully submersible.
- IP68 rated.**
- CREE 2 step binned LEDs with L70 over 80,000 hours.

SPECIFICATIONS

- **Construction:** 6061 aircraft-grade aluminum, stainless steel or raw brass
- **Finishes:** Black (BLK), White (WHT), Stainless Steel (SS), Brass (BR)
- **Lead Wire:** 60" 22 AWG tinned copper
- **Lens:** Clear flat
- **Driver System:** Internal
- **Operating Voltage:** 10.5-18 VAC
- **CRI:** 80+
- **Beam Spreads:** 12°, 25°, 40°, 60°
- **Accessories:** Swivel mounting bracket and shroud (not included)



POWER CONSUMPTION

COLOR TEMPERATURE	WATTAGE	VA	LUMENS
● 3000K*	1W	2VA	130LM

ADDITIONAL COLOR TEMPERATURE OPTIONS

- 2700K ● 5000K ● Amber ● Blue ● Royal Blue
- Green ● Red

WARRANTY

20 Year Limited Warranty

CERTIFICATIONS



Tested to UL standards.

Intertek

APPLICATION RESTRICTIONS

Black Finish- Fresh water, Fish Ponds and Fish Tanks. *NOT suitable for salt or chlorinated water. No harsh chemicals.*

Stainless Steel Finish- Fresh Water, Salt Water, Chlorinated Water, Fish Ponds and Fish Tanks.

Brass Finish- Fresh water *ONLY. NOT suitable for fish.*

****White Finish-** *NOT suitable for underwater applications.*

**Indicates stocked items. Non-stocked items require 5-7 business days additional lead time, special order deposit and are non-refundable.*

IES files can be found at www.gardenlightled.com