

The Micro Series

Garden Light LED leads the landscape lighting industry in LED luminaire miniaturization. These CNC-machined fixtures are self-contained wonders at only 1.25" wide! Available in five different beam patterns, the potential applications for these small fixtures are as unlimited as the imagination.

- **Micro Max- Standard flood**

- Ideal for railings, water features, ceiling beam downlighting, walkways, decks, gazebos, statues, planters, lanais, fences, fire pits and benches.

- **Owl- Long, linear beam spread**

- Ideal for benches, countertops, stonewalls, and garages.

- **Tiger Eye- Rectangular beam spread**

- Ideal for railings and walkways.

- **Ram- V-shaped beam spread**

- Ideal for ceiling beam downlighting and gazebos.

- **Rock- Forward and down beam spread**

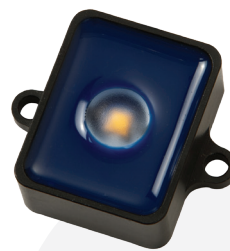
- Ideal for shrubs, statues.

These fixtures are all IP67 rated and fully submersible options are available upon special order request.

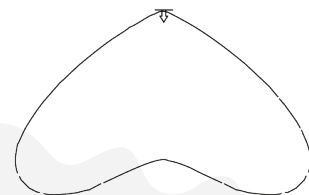
Contact your sales representative today for more information!



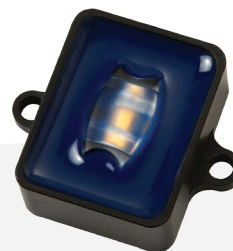
Innovative. Precise. Reliable.



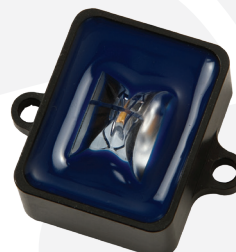
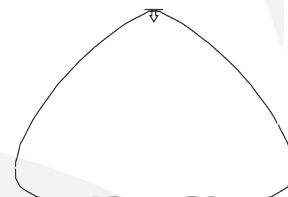
Micro Max



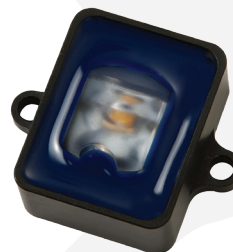
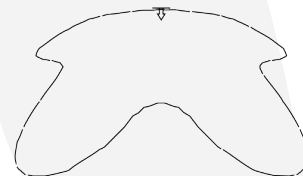
Owl



Tiger Eye



Ram



Rock

